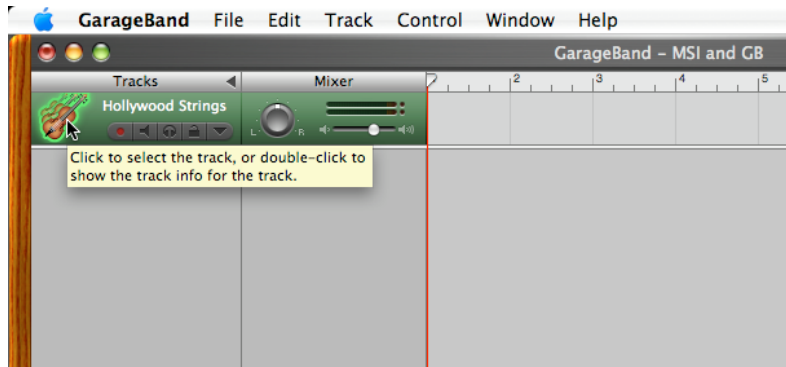


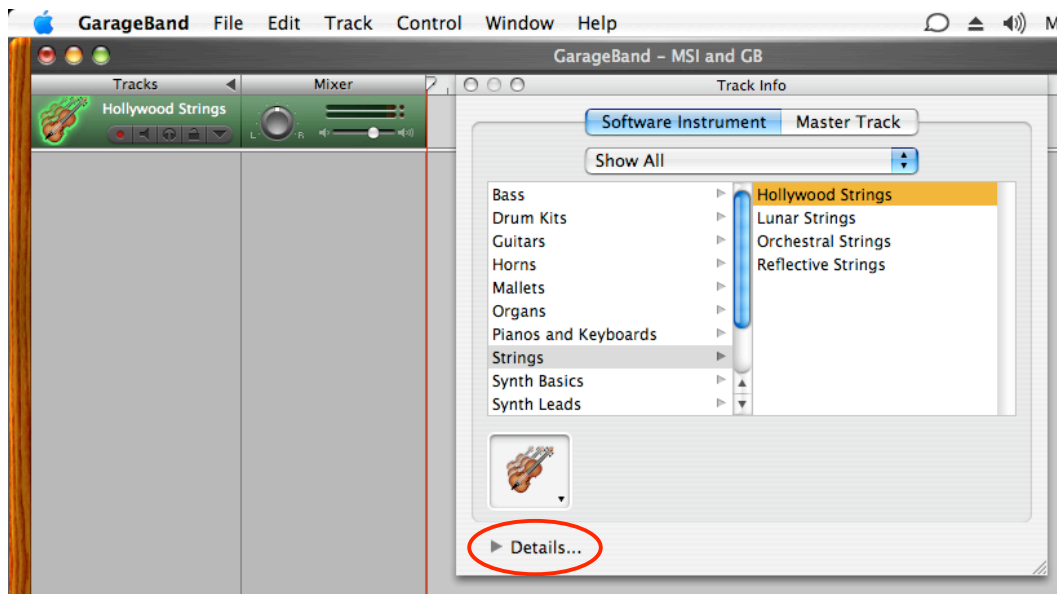
## How do I use the MOTU Symphonic Instrument with Garageband?

Follow these steps to use the MOTU Symphonic Instrument in Garageband:

\* Create a new software instrument track and then double-click the track in the timeline (any preset will work - but it is advisable to keep it in a similar instrument family).

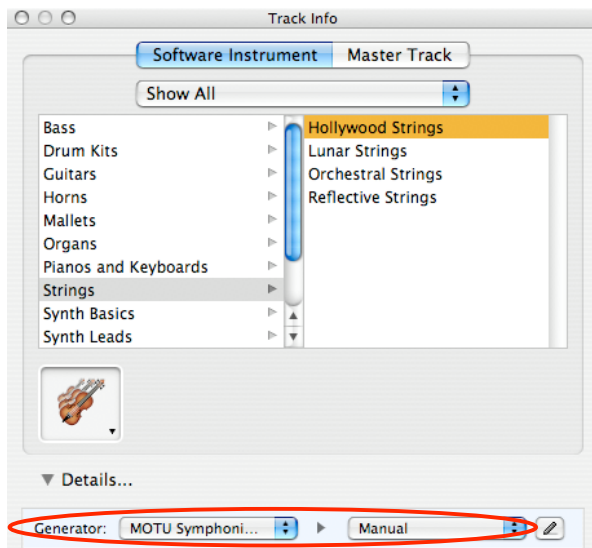


\* In the Track popup window, click on the Details pull-down arrow.

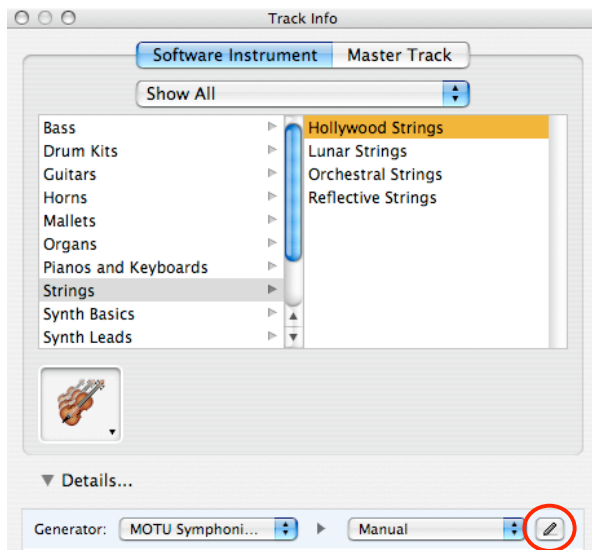


[ Next page >> ]

\* Under Generator, select MOTU Symphonic Instrument from the first pulldown menu and Manual from the second.



\* Click on the Edit button.



[ Next page >> ]

\* The MOTU Symphonic Instrument window will pop up.



\* From here, you can select one preset (Garageband can not use multichannel instruments).

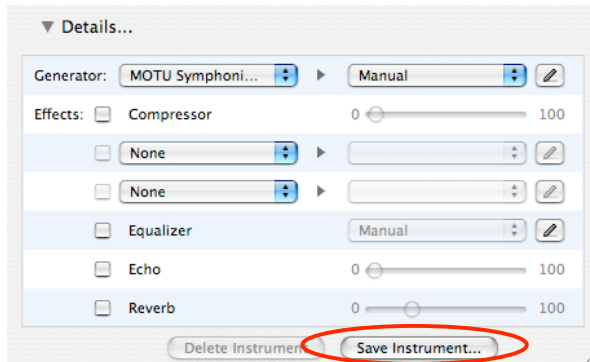


[ Next page >> ]

- \* However, you can layer sounds by assigning a sound to another part in MSI, and assigning them to respond to the same MIDI channel.
- \* MSI also has an Expert Mode which gives you control in switching between and layering sounds, even when only responding to one MIDI channel -- check with your MSI documentation for details on Expert mode.



- \* To save this as a preset you can call up in Garageband, click on the Save Instrument button.



=====

MOTU Technical Support  
 voice : (617) 576-3066 [Mon-Fri 9am-6pm Eastern]  
 fax : (617) 354-3068  
 email : techsupport@motu.com  
 web : http://www.motu.com/techsupport

=====